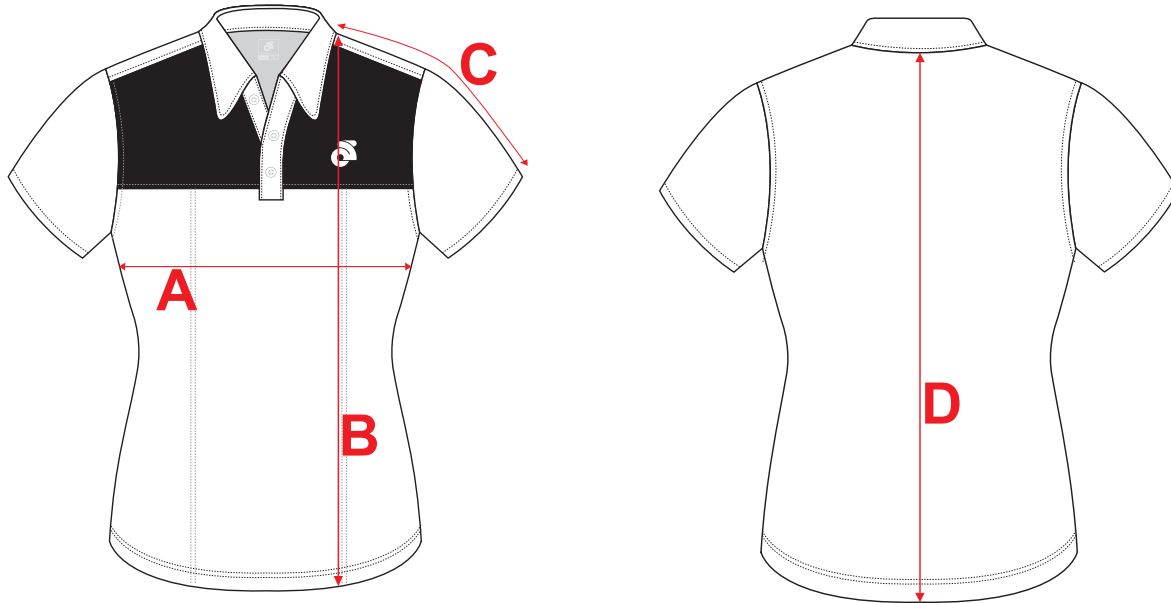


If you're unsure which size to buy, try measuring a Technical Polo Shirt that you already own that fits you well, and compare those measurements to the size chart. Lay the Technical Polo Shirt on a flat surface and use the above guide to measure the Technical Polo Shirt.

Note: All measurements are approximate.

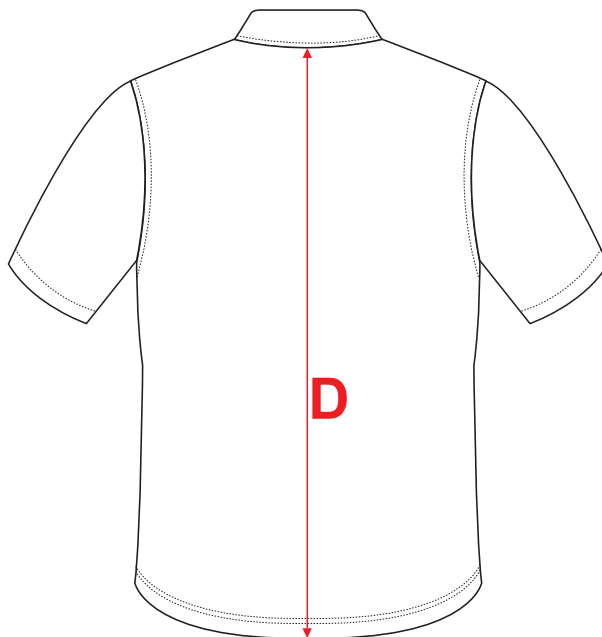
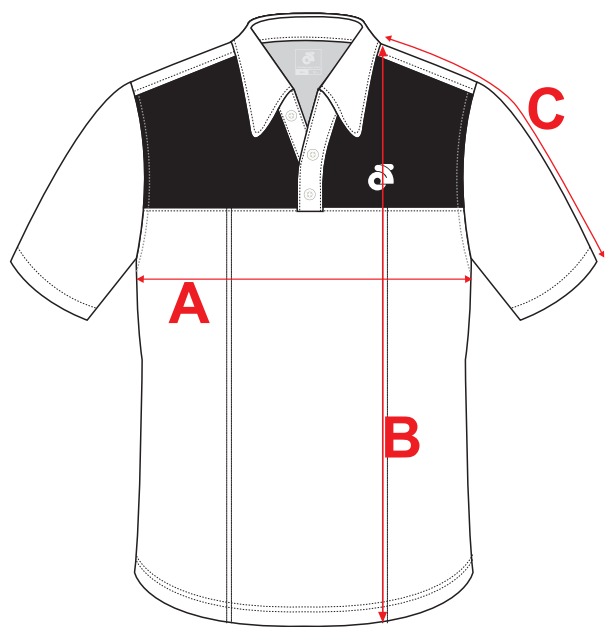
Size	A (Chest)	B (Front Length)	C (S/S Length)	D (Back Length)
XS	47cm	65cm	32.5cm	63cm
S	49.5cm	67.5cm	33.5cm	65cm
M	52cm	70cm	35cm	67.5cm
L	54.5cm	72.5cm	36cm	69.5cm
XL	58.5cm	73.5cm	37.5cm	70.5cm
2XL	62cm	75cm	38.5cm	71.5cm
3XL	66cm	76cm	40cm	72.5cm
4XL	70cm	77.5cm	41.5cm	73.5cm



If you're unsure which size to buy, try measuring a Technical Polo Shirt that you already own that fits you well, and compare those measurements to the size chart. Lay the Technical Polo Shirt on a flat surface and use the above guide to measure the Technical Polo Shirt.

Note: All measurements are approximate.

Size	A (Chest)	B (Front Length)	C (S/S Length)	D (Back Length)
XS	42cm	61cm	25.5cm	59cm
S	44.5cm	63.5cm	26.5cm	61.5cm
M	47cm	66cm	28cm	63.5cm
L	49.5cm	68.5cm	29cm	65.5cm
XL	52cm	71cm	30.5cm	68cm
2XL	54.5cm	73.5cm	32cm	70cm
3XL	58.5cm	75cm	33cm	71cm
4XL	62cm	76cm	34.5cm	72cm



If you're unsure which size to buy, try measuring a Technical Polo Shirt that you already own that fits you well, and compare those measurements to the size chart. Lay the Technical Polo Shirt on a flat surface and use the above guide to measure the Technical Polo Shirt.

Note: All measurements are approximate.

Size	A (Chest)	B (Front Length)	C (S/S Length)	D (Back Length)
XS	33cm	48.5cm	21.5cm	45.5cm
S	35.5cm	52cm	23cm	49.5cm
M	38cm	56cm	24cm	53.5cm
L	40.5cm	59.5cm	25.5cm	57cm
XL	43cm	63.5cm	26.5cm	61cm